

Model:
(91283-147) Viking 12v
(91284-147) Viking 24v

UNIQUE
LIGHTSCAPING™
a brand of Sea Gull Lighting

Description: 12V OR 24V Solid Brass Step / Post Light
Lamp Provided: 20 Watt Astro-Brite Bi-Pin Bulb
(Maximum Wattage-20 watts)

ASSEMBLY/INSTALLATION INSTRUCTIONS:

Please read carefully before installing. Save these instructions.

TOOLS REQUIRED: Slot and Philips screwdriver. It is recommended that when installing any low voltage fixture you have (at a minimum) the following items: digital voltage meter, amp probe, wire nuts, and assorted hand tools

1. Remove fixture from packaging. To remove face cover, align the arrow on cover plate with the mark on the back plate and pull.
2. **BEFORE DRILLING AND MOUNTING USE TEMPLATE TO ALIGN FOR ACCURATE POSITIONING.**
3. Determine fixture location. Typically this is on a wooden structure such as a stairway, post or block wall. If mounting to wood use a screwdriver and attach the back plate with the screws provided. If you are attaching to masonry, use a 1/4" masonry bit to drill the necessary size holes to accommodate the provided anchors. When the holes are drilled, insert the plastic anchors into the holes.
4. Before applying silicone to the back plate to the mounting surface, verify installation accuracy (make sure face plate will end up in the correct position).
5. Remove the 20 watt Astro-Brite lamp from the box (supplied with the fixture), you can touch the bulb, and push in place in the lamp socket. The lock and load feature allows you to align the arrow on cover plate with the mark on the back plate and twist to desired mounting position.
6. After the fixture is installed, simply pull the 25' wire lead to your connection point (hub) and connect the two wires. (Note: even though polarity is not an issue, it is recommended that you always match the polarity, that is to say put the lettering-to-lettering wires and the ribbed to ribbed wires together.)

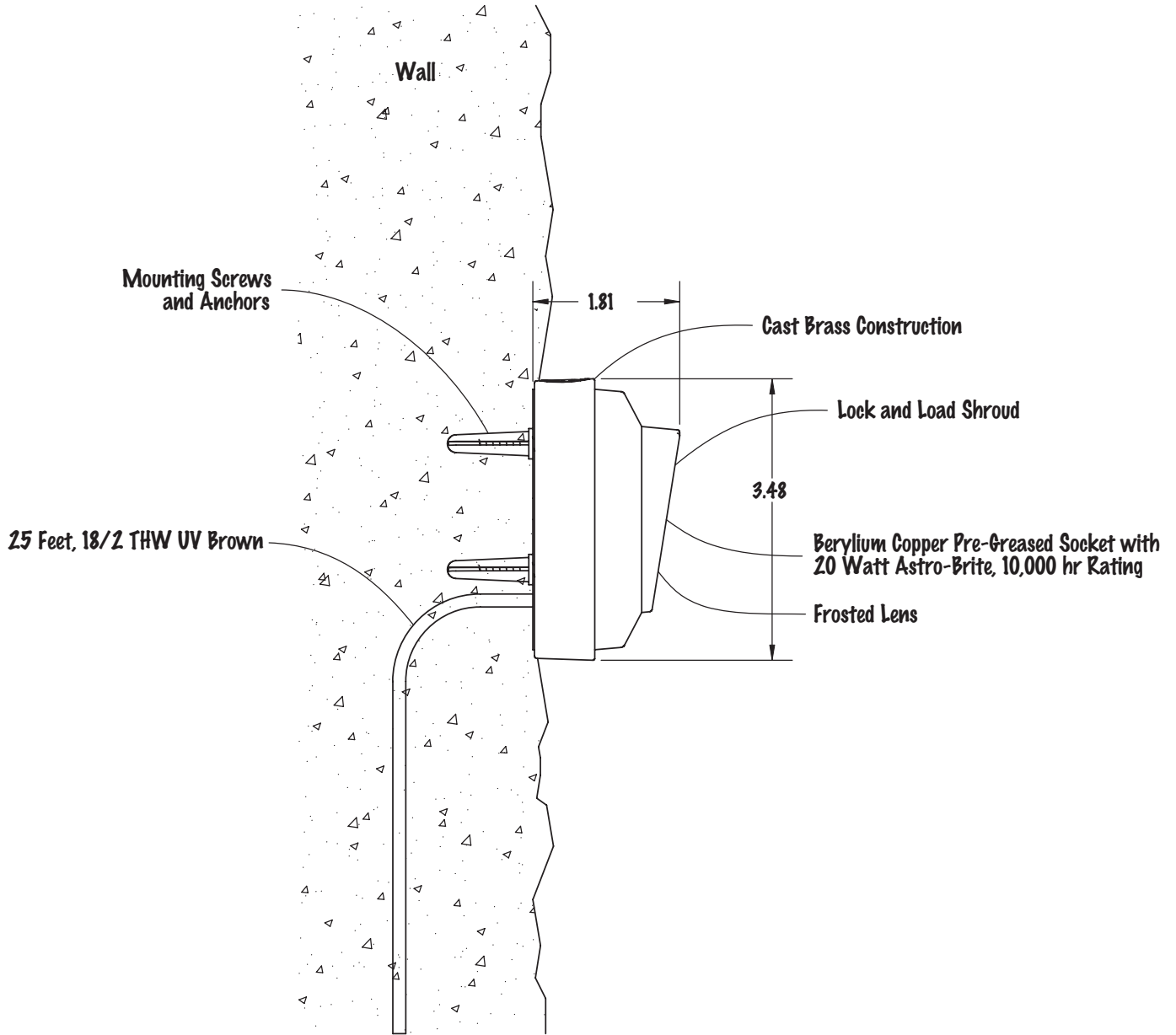
Important safety and maintenance instructions

1. Use with low-voltage outdoor lighting system only.
2. Lamp is hot when lit! Do not touch when lamp is on!
3. Allow fixture to cool before touching or re-lamping fixture!
4. **Keep away from materials, structures or landscapes that may burn!**
5. Do not operate fixture if cover shield is damaged or missing.
6. Do not submerge fixture in water.
7. Clean fixture with mild soap. Do not use acid or any other solvent base cleaner.

CAUTION: DO NOT OVERLOAD CABLE or TRANSFORMER and maintain polarity at all times. For 12 volt systems, keep each fixture between 10.8 and 12 operating volts. For 24 volt systems, keep each fixture between 21.6 and 24.7 operating volts. Consult with a qualified electrical contractor and local electrical codes before installing any electrical product.

UNIQUE LIGHTSCAPING™

a brand of Sea Gull Lighting



Model Shown: (91283-147) Viking 12v

- NOTES:
- Lifetime Warranty
 - Maximum Wattage: 20 Watts
 - Included: Frosted Lens
 - Level of Light Application: 1 & 2
 - Weatherd Brass Finish

FIXTURE NAME

VIKING

DESCRIPTION

CAST BRASS NICHE LIGHT

REV

SCALE: NONE

WEIGHT: 1.2 lbs

9/6/07