



# 1632-15

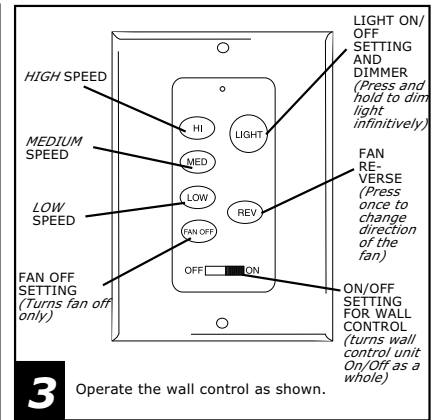
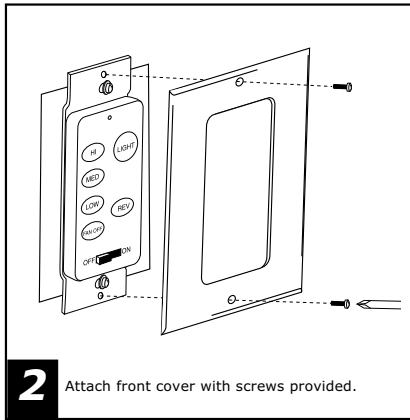
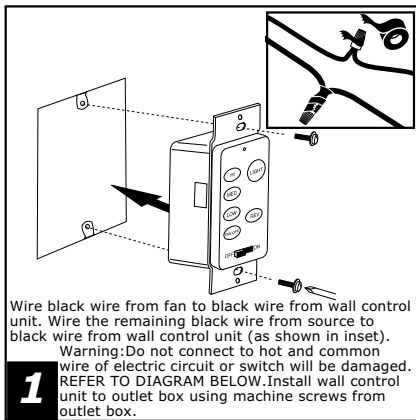
## REMOTE FAN WALL CONTROL

The wall control transmits the command signals via radio waves to the receiver installed in the fan's hanging bracket. The receiver is required for the wall control to function. Power for the wall control comes from the house's 120 volt power supply.

Make sure to connect the wall control "In Series" with one of the wires going to the ceiling fan. Do not connect the controls two wires across both the "Hot" and "Common" wires (parallel hook up).

The frequency switches (dip switches) on the wall control and the receiver have been preset at factory. Please recheck to make sure the switches on the wall control and receiver are set to the same position. Any combination of settings are fine as long as the wall control and ceiling fan receiver are set to the same position.

**CAUTION: TURN OFF POWER AT FUSE BOX TO AVOID POSSIBLE ELECTRICAL SHOCK.**



© Copyright 2002, Seagull Lighting ®.

